



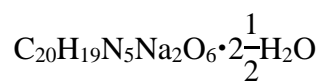
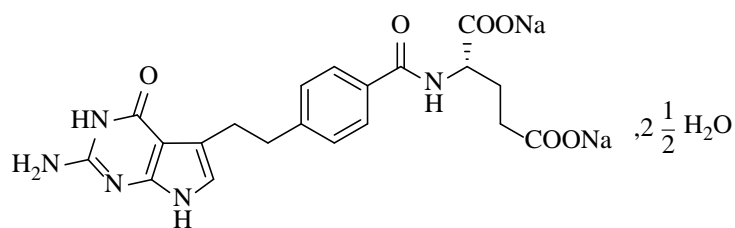
2020 12 01

2021 09 18

Pemetrexed Disodium for Injection

Zhusheyong Peimeiqusai erna

N-[4-[2-(2-amino-4,7-dihydro-1H-imidazo[2,3-d]pyridin-5-yl)ethyl]phenyl]carbamoyl-L-propanoic acid disodium salt



516.41

---

ALK

EGFR

ALK

EGFR  
NSCLC

4

---

0.1g  $C_{20}H_{21}N_5O_6$

---

500mg/m<sup>2</sup>

BSA

10

21

1

---

500mg/m<sup>2</sup> BSA 10 21  
1

---

500mg/m<sup>2</sup> BSA 10 21  
1 75mg/m<sup>2</sup> BSA 2  
21 1 30 /

---

10 21 1 500mg/m<sup>2</sup> BSA

---

350~1000μg 7 5  
21  
B<sub>12</sub> 1000μg 3  
B<sub>12</sub>

---

4mg

---

WCC

$\geq 45 \text{ mL/min}$        $\text{ANC} \geq 1500 / \text{mm}^3$        $\geq 100,000 / \text{mm}^3$   
 $\leq 1.5$        $\text{AP}$   
 $\text{AST}$     $\text{SGOT}$        $\text{ALT}$     $\text{SGPT} \leq 3$   
 $\text{AST}$     $\text{ALT} \leq 5$

1-3

1-3

|                      |                                     |     |
|----------------------|-------------------------------------|-----|
| $50,000/\text{mm}^3$ | $< 500/\text{mm}^3$                 | 75% |
|                      | $< 50,000/\text{mm}^3$              | 75% |
|                      | $< 50,000/\text{mm}^3$ <sup>a</sup> | 50% |

<sup>a</sup> NCI    CTCAE    CTCAE v2.0    NCI 1998    CTCAE 2    CTCAE=

3

2

a,b

|   |   |     |
|---|---|-----|
|   |   |     |
| 3 | 4 | 75% |
|   |   | 75% |

3    4     $\text{MO?} \pm \bullet \text{L}'\$í , ' + \dots$     3    4

<sup>a</sup> NCI CTCAE CTCAE v2.0 NCI 1998

25mg/mL

pH 6.6-7.8

4.

9mg/mL 0.9%

100mL

10

5.

PVC

6.

7.

---

24

2°C-8°C

24

---

0.9%

≥20%

≥20%

/

---

KEYNOTE-189

JMDB NSCLC

1:1 21 1

500mg/m<sup>2</sup> 75mg/m<sup>2</sup> n=839 21

1 8 1250mg/m<sup>2</sup> 1

75mg/m<sup>2</sup> n=830 B<sub>12</sub>

JMDB ECOG PS 2

45mL/min

B<sub>12</sub>

JMDB 839

61 26-83 70% 78% 16% 2.9%

2.1% <1% 36% ECOG PS 0

5

4 JMDB 839 ≥5%

JMDB 4

≥5%

|  | (%) | (%) | (%) | (%) |
|--|-----|-----|-----|-----|
|  | 90  | 37  | 91  | 53  |
|  |     |     |     |     |
|  | 33  | 6   | 46  | 10  |
|  | 29  | 15  | 38  | 27  |
|  | 18  | 5   | 21  | 8   |
|  | 10  | 4   | 27  | 13  |
|  |     |     |     |     |
|  | 10  | 1   | 7   | 1   |

|   |    |   |    |   |
|---|----|---|----|---|
|   |    |   |    |   |
|   | 43 | 7 | 45 | 5 |
|   | 56 | 7 | 53 | 4 |
|   | 40 | 6 | 36 | 6 |
|   | 27 | 2 | 24 | 1 |
|   | 21 | 1 | 20 | 0 |
| / | 14 | 1 | 12 | 0 |
|   | 12 | 1 | 13 | 2 |
| / | 5  | 0 | 6  | 0 |
|   | 9  | 0 | 12 | 1 |
|   | 8  | 0 | 9  | 0 |
|   | 12 | 0 | 21 | 1 |
| / | 7  | 0 | 8  | 1 |

<sup>a</sup> NCI CTCAE 2.0

**1% 5%**

—  
—  
— AST ALT

**1%**

—  
—  
— GGT  
—

---

JMEN 4

NSCLC 2:1

21 500mg/m<sup>2</sup>

B<sub>12</sub>

JMEN ECOG PS 2

45mL/min

B<sub>12</sub>

|       |      |           |     |      |     |
|-------|------|-----------|-----|------|-----|
|       | JMEN | 438       |     |      | 61  |
| 26-83 | 73%  | 65%       | 31% | 2.9% |     |
| <2%   | 39%  | ECOG PS 0 |     |      | 5   |
|       | 96%  |           | 48% | 6    | 21  |
|       | 23%  | 10        | 21  |      |     |
| 5     | JMEN | 438       |     |      | ≥5% |
|       | 5    |           |     |      |     |

1% 5%

/ — /

—

—

—

—

1%

—

/ —

—

/

—

—

PARAMOUNT

4

NSCLC

2:1

21

1

500mg/m<sup>2</sup>

B<sub>12</sub>

PARAMOUNT

ECOG PS 2

45mL/min

B<sub>12</sub>

PARAMOUNT

333

61

32 83

58%

94%

4.8%

<1%

36%

ECOG PS 0

4

3.3%

0.6%

22%

16%

6

PARAMOUNT

333

≥5%

≥5%

|  |   |   |   |
|--|---|---|---|
|  |   |   |   |
|  | % | % | ( |

PS 3

45mL/min

B<sub>12</sub>

265

58

70%

24%

2.6%

2%

19%

ECOG PS

0

265

≥5%

7

≥5%

| (N=265) |   |    |    |
|---------|---|----|----|
| %       | % | %  | %  |
|         |   |    |    |
|         |   |    |    |
| 19      | 4 | 22 | 4  |
| 12      | 4 | 34 | 27 |
| 11      | 5 | 45 | 40 |
| 8       | 2 | 1  | 0  |
|         |   |    |    |
| 8       | 2 | 1  | 0  |
| 7       | 1 | 1  | 0  |
|         |   |    |    |
|         |   |    |    |
| 31      | 3 | 17 | 2  |
|         | 2 | 24 | 3  |
|         | 2 | 12 | 1  |

1% 5%

— /

/ —

—

1%

—

—

JMCH

1:1

21

1

500mg/m<sup>2</sup>

75mg/m<sup>2</sup>

21

1

75mg/m<sup>2</sup>

226

1

222

1

226

74% n=168

B<sub>12</sub>

14% n=32

12% n=26

JMCH

KPS

70

45mL/min

B<sub>12</sub>

168

60

19

85

82%

92%

5%

3.0%

<1%

54%

KPS

90-100

/

6

/

2

93%

8

JMCH

≥5%

JMCH

8

≥5%

%

%

%

|  |    |    |    |   |
|--|----|----|----|---|
|  |    |    |    |   |
|  | 56 | 23 | 13 | 3 |
|  | 53 | 15 | 17 | 1 |
|  | 26 | 4  | 10 | 0 |
|  | 23 | 5  | 9  | 0 |

—

—

9 JMCH  
CTCAE 3 4

NCI  
B<sub>12</sub>

|     | <b>N=168(%)</b> | <b>N=32(%)</b> |
|-----|-----------------|----------------|
| /   | 23              | 38             |
|     | 5               | 9              |
|     | 11              | 31             |
|     | 1               | 9              |
| 3/4 | 0               | 6              |
|     | 4               |                |

ORIENT-11

$\geq 20\%$

10

JMID

106

5%

CTCAE

5%

|  |          | (%)  | (%) | (%)  | (%) |
|--|----------|------|-----|------|-----|
|  |          | 32.3 | 1.6 | 16.2 | 2.7 |
|  |          | 30.6 | 1.6 | 13.5 | 0.0 |
|  | ALT SGPT | 22.6 | 1.6 | 16.2 | 0.0 |
|  | /        | 17.7 | 0.0 | 5.4  | 0.0 |
|  | AST SGOT | 16.1 | 0.0 | 16.2 | 0.0 |
|  |          | 16.1 | 0.0 | 2.7  | 0.0 |
|  |          | 14.5 | 0.0 | 2.7  | 0.0 |
|  | /        | 11.3 | 1.6 | 0.0  | 0.0 |
|  | -        | 11.3 | 0.0 | 0.0  | 0.0 |
|  |          | 9.7  | 0.0 | 0.0  | 0.0 |
|  |          | 8.1  | 0.0 | 0.0  | 0.0 |
|  | -        | 6.5  | 0.0 | 0.0  | 0.0 |
|  | 6.5      | 0.0  | 0.0 | 0.0  |     |

ALT=

AGC=

ANC=

AST=

CTCAE=

CTCAE

3.0

NCI2003

G=

N=

SGOT=

SGPT=

WBC=

a

$\geq 10\%$

$\geq 5\%$

$< 10\%$

5%

b

CTCAE

3.0

NCI2003

B<sub>12</sub>

B<sub>12</sub>

B<sub>12</sub>

3/4

3/4

\_\_\_\_\_

ANC  $\geq 1500$  /mm<sup>3</sup>  
ANC  $\geq 100,000$  /mm<sup>3</sup>

\_\_\_\_\_

<45mL/min  
<45mL/min

\_\_\_\_\_

45 79mL/min 2  
NSAIDs 1.3g/  
5 2  
NSAIDs

\_\_\_\_\_

6

\_\_\_\_\_

31

2

/

0.1g

0.47mmol 11mg

65

65

65

|        |          |                     |           |
|--------|----------|---------------------|-----------|
|        |          | $\geq 80$ mL/min    | NSAIDs    |
|        | 1600 mg/ | $\geq 1.3$ g/       |           |
| mL/min | NSAIDs   |                     | $\geq 80$ |
|        |          | $\geq 45-79$ mL/min | 2         |
|        | 2        | NSAIDs              |           |
|        |          | NSAIDs              |           |
|        | NSAIDs   |                     | 5         |
| 2      | NSAIDs   | NSAIDs              |           |

**P450**

CYP3A CYP2D6 CYP2C9 CYP1A2

INR



500mg/m<sup>2</sup> 0.03

500mg/m<sup>2</sup> 0.0012

838 mg/m<sup>2</sup>

10

426

9 L/m<sup>2</sup>

0.2-

81%

24

70%-90%

OAT3

3

90 mL/min)

91.8 mL/min

3.5

19.3%

AUC

26 80

B<sub>12</sub>

22

4

18

12

13

9

400 2480 mg/m<sup>2</sup>

AUC

C<sub>max</sub>

2.30 L/h/m<sup>2</sup>

2.3

1 /

36

YBH12702021

H20205050

5

222069

4008285227

9:00-17:00

602146B01