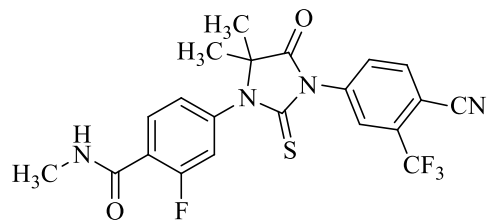


普来坦®













**4 PROSPER**

	N = 930		N = 465	
	1-4 <sup>1</sup> %	3-4 %	1-4 %	3-4 %
	9.6	0.2	3.9	0.2
<sup>2</sup>	12	0.5	5.2	0
	9.1	0.2	4.5	0
<sup>3</sup>	4.6	0.1	1.5	0
	13	0.1	7.7	0
	12	4.6	5.2	2.2

0.3%  
0.3%

4.4%  
2.1% 0.7%

/

**7 H9**

	N=572		(N=574)	
	1-4 <sup>1</sup> %	3-4 %	1-4 %	3-4 %
	4.9	0.2	2.6	0
<sup>2</sup>	4.5	0.7	2.1	0
	2.4	0	0.3	0
	27	0.3	22	0
	8.0	3.3	5.6	1.7
<sup>3</sup>	24	1.7	20	1.6
	6.3	0.2	4.0	0.2
<sup>4</sup>	6.5	1.0	4.2	1.0

1. CTCAE 4.03

2.

3.

4.

>2%

6

	N = 3173		N = 2282	
	1-4 %	3-4 %	1-4 %	3-4 %
	20	0.9	17	

	83	3.2	75	3.1
	16	0.1	13	0
	13	1.4	8.6	1.5
	6.8	0.1	4.5	0

+O)·6 [j

,P

---

!

\_\_\_\_\_ PRES  
PRES PRES  
PRES MRI  
PRES  
\_\_\_\_\_  
7 0.5%  
0.1% 0.1%

\_\_\_\_\_

\_\_\_\_\_

\_\_\_\_\_

CYP2C9  
INR

---

III

6

3

NYHA III IV

[

]

---

---

---

---

---

---

---

3

3

\_\_\_\_\_

1540 35% 4403 3451 78%

\_\_\_\_\_

*CYP2C8*

CYP2C8  
CYP2C8 600 mg 2 AUC 326%  
C<sub>max</sub> 18% AUC 77% C<sub>max</sub>  
19% CYP2C8  
CYP2C8 80 mg 1

*CYP3A4*

CYP3A4 CYP3A4  
200 mg 1 AUC 41% C<sub>max</sub>  
AUC 27% C<sub>max</sub> CYP3A4

*CYP2C8*

*CYP3A4*

CYP2C8 CYP3A4 600 mg 1  
AUC 37% C<sub>max</sub> CYP2C8  
CYP3A4

\_\_\_\_\_

CYP3A CYP2B6 CYP2C9 CYP2C19

UGT-  
2 MRP2  
CYP3A4  
160 mg  
CYP3A4 S-

1B1 OATP1B1  
CYP2C9 CYP2C19  
1 CYP





— V/F 110 L 29% CV

95% 97-98%

—  
1 2 N-  
CYP2C8 CYP2C8 CYP3A4/5  
N- N-  
1 N- CYP  
CYP3A4 CYP2C9 CYP2C19  
CYP2C8

—  
14C- 77 CL/F 0.520-0.564 L/h  
0.39% 84.6% 71.0%  
13.6%  
P-gp BCRP OATP1B1 OATP1B3 OCT1 N-

OATP1B1 OATP1B3 OCT2 OAT1

— 40-160 mg 1  
C<sub>min</sub>

— mol/L 2 mg/dL >177  
Cockcroft-Gault CrCL  
mL/min CrCL<30

			2	10.4	4.7			
A	B	C	N = 6	N = 8	N=8	Child-Pugh		
			22					
			160 mg					
	AUC	C <sub>max</sub>		5%	24%			29%
11%					5%	41%		
							AUC	C <sub>max</sub>
19%				14%	17%			14%
34%		27%						
								>75%

