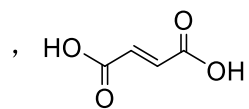
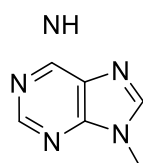


R

% 7 : >:3 76 2>:56%23=6

:>:: 7 6!:2

, R ,, S ,,,



!

> 8

!

> 8

□

> □ > :

□

> □ > :

Child-Pugh

25mg QD 96

670

ALT

11.1%

10.5%

DNA

HBV

6

ALT

HBV

Child-Pugh >9 C HBV

CrCl <50mL/min HBV

3.0% 96 14.4% 4.8% TDF 48 11.4%

HBV

HCV

HDV

HBV

HIV

HBV

HIV

HBV

HIV

-

144

3

18

65

P-

P-gp

P-gp

gp

P-

P-gp

486 246 TDF 34 71%

93.3% 6.4% 28.9%

HBV DNA 7.3log₁₀ IU/mL ALT 136U/L 60.7% 38.8%

HBV C B

HBeAg

270 HBeAg 25mg TDF 300mg

180 90 TDF 42.8

75.2% 93.7% 7.0% 28.5%

HBV DNA 5.8 log₁₀IU/mL ALT 121U/L 53.3% 42.6%

HBV B C

48 48 HBV

DNA 20 IU/mL 48

HBeAg HBeAg

25mg QD TDF 3 96

4

	HBeAg		HBeAg	
	N=486	TDF N=246	N=180	TDF N=90
HBV DNA<20IU/mL	52.8%	55.9%	90.2%	92.9%
ALT	83.6%	78.4%	89.2%	90.8%
HBeAg /	17.6%/10.0%	17.2%/8.9%	NA	NA
HBsAg /	0/0	0/0	0.6%/0	0/0

ALT

ALT

NA=

4

	HBeAg		HBeAg	
	(N=486)	TDF (N=246)	(N=180)	TDF (N=90)
HBV DNA<20IU/mL	71%	71.2%	93.1%	94%
ALT	89.4%	85.1%	91.4%	

0.07% BMD 0.46% TDF BMD
1.93% BMD 2.06% TDF
2.06%
96 BMD

(q1 q3)	0.00 (-2.10,2.00) (g/cm ²)	-2.05 (-3.90,0.15) (g/cm ²)	-0.50 (-2.40,1.40) (g/cm ²)	-1.90 (-3.90,-0.05) (g/cm ²)	1.00 (-4.00,6.00) μmol/L	2.00 (-4.00,6.44) μmol/L
,	-20.1,59.5 (g/cm ²)	-18.1,9.1 (g/cm ²)	-13.9,16.1 (g/cm ²)	-13.1,35.7 (g/cm ²)	-56.0,32.8 μmol/L	-20.0,28.0 μmol/L
()*	0.09(0.181) (g/cm ²)	-1.90(0.239) (g/cm ²)	-0.50(0.162) (g/cm ²)	-2.09(0.213) (g/cm ²)	0.01(0.375) μmol/L	1.13(0.492) μmol/L
*		1.99 (1.462,2.523)		1.59 (1.117,2.062)		-1.12 (-2.219,- 0.027)
P		<0.001		<0.001		0.045

-)

HBV

DNA

DNA

HBV

DNA

(

DNA

HBV

HepG2.2.15

EC₅₀

1.42nM

HepG2

CC₅₀>10000 nM

HepG2

()

(rtV173L rtL180M rtM204V/I)

HBV

(EC₅₀

< 2)

(rtL180M rtM204V + rtT184G rtS202G rtM250V)

HBV

(rtA181T rtA181V rtN236T)

HBV

rtA181V + rtN236T

HBV

(EC₅₀

3.7)

Ames

4

2 7 25 75 225mg/kg (25mg/ 10 29 86),225mg/kg

NOEAL 75mg/kg

NOAEL 225 mg/kg

NOAEL 75mg/kg

- (6~15)

25 75 225 mg/kg (AUC 25mg/

18 74 325) 225 mg/kg

NOAEL 75mg/kg

6~18 5 25 125mg/kg (AUC 25mg/

8 31 129) 125 mg/kg

5~6

1~12

NOAEL 125 mg/kg

- NOAEL 25mg/kg

6 (21)

10 30 100mg/kg (25mg/ 3.9 12 39)

100 mg/kg (F1)

NOAEL 100mg/kg

:

300mg

10 () 4 ()

(25mg/) 189 ()

63 ()

(25mg/) 189

0~528h 85.0%
12.7% 72.3%

18

HBV TFV

18.07-541U/L

TFV

ALT

HBV TFV

*

9 A 92 94